

Tasmania Regional Distribution Centre TIR Update – December 2011



March 2011



April 2011



June 2011



August 2011



October 2011



Contents

- Key Milestone dates
- DC Facts & Figures
- DC Layout
- SIW Organisational Structure
- Construction Update



Key Milestone Dates

- Ø *Construction commenced* **10th Nov 2010**
- Ø *Racking installation commenced* **23rd Sep 2011**
- Ø *-15 weeks change readiness review completed* **15th Nov 2011**
- Ø *-12 weeks change readiness review completed* **5th Dec 2011**

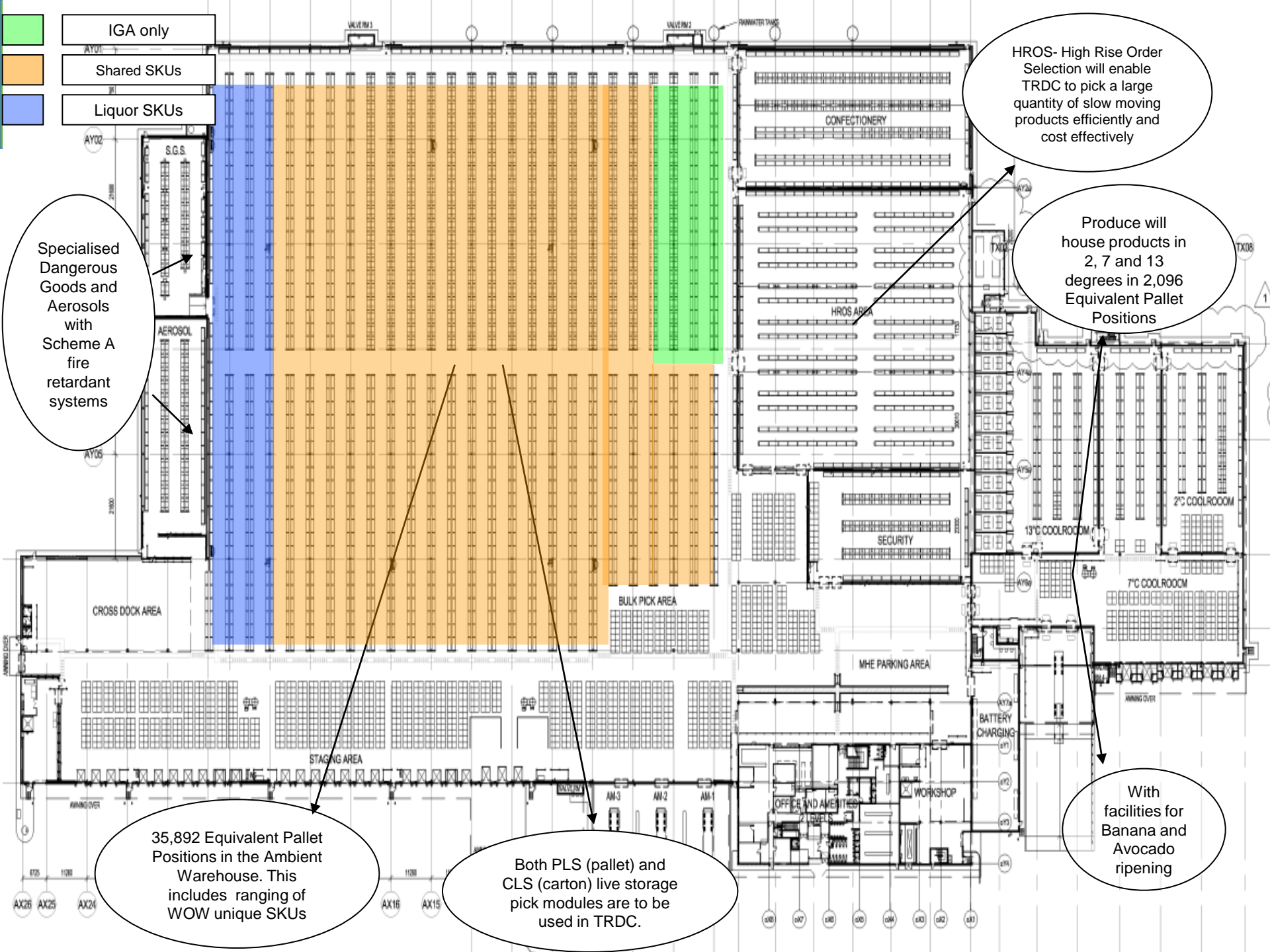
- Ø *Computer Room Fit out commences* **16th Dec 2011**
- Ø *-7 weeks change readiness review* **9th Jan 2012**
- Ø *-4 weeks change readiness review* **1st Feb 2012**
- Ø *-2 weeks change readiness review* **14th Feb 2012**
- Ø *Site handover to SIW* **14th Feb 2012**
- Ø *Site Set Up / Training completed* **26th Feb**
- Ø *First Receipt* **27th Feb 2012**
- Ø *First Despatch* **19th Mar 2012**
- Ø *Prospect Transition Completed* **13th Apr 2012**
- Ø *Hobart Transition Completed* **4th May 2012**
- Ø *Devonport transition completed* **11th May 2012**



DC facts & figures

- Ø Total development costs for phase 1 are \$83.7m (capital spend to date \$56m)
- Ø Land occupies approximately 20 hectares
- Ø Size of the DC 43,000m²
 - § Ambient – 35,000m²
 - 26 Flush Docks + 4 On Grade Docks
 - § Produce – 5,000m²
 - 6 Flush Docks + 1 On Grade Dock
 - 16 x 12 pallet Banana/ Avocado Ripening Rooms
 - § Office Area - 3,000m²
- Ø 9,395 pallets per week received into the DC from 7th May
- Ø 420,000 cartons (5045 pallets) per week picked and despatched to stores from 7th May
- Ø 65,000 cartons (713 pallets) per week cross docked through the DC to stores from 7th May
- Ø The DC will employ approximately 180 people





- IGA only
- Shared SKUs
- Liquor SKUs

HROS- High Rise Order Selection will enable TRDC to pick a large quantity of slow moving products efficiently and cost effectively

Produce will house products in 2, 7 and 13 degrees in 2,096 Equivalent Pallet Positions

Specialised Dangerous Goods and Aerosols with Scheme A fire retardant systems

With facilities for Banana and Avocado ripening

35,892 Equivalent Pallet Positions in the Ambient Warehouse. This includes ranging of WOW unique SKUs

Both PLS (pallet) and CLS (carton) live storage pick modules are to be used in TRDC.



CONFECTIONERY

HROS AREA

SECURITY

2°C COOLROOM

13°C COOLROOM

7°C COOLROOM

CROSS DOCK AREA

BULK PICK AREA

MHE PARKING AREA

STAGING AREA

OFFICE AND AMENITIES

WORKSHOP

BATTERY CHARGING

HANDOVER

AY05

AY02

AY01

S.G.S.

AEROSOL

VALVE RM 1

VALVE RM 2

DRAIN WATER TANK

TX08

1

AX26

AX25

AX24

AX16

AX15

AM-3

AM-2

AM-1

AX08

AX07

AX06

AX05

AX04

AX03

AX02

AX01

AY04

AY03

AY02

AY01

AY00

AY00

AY00

AY00

AY00

AY00

AY04

AY03

AY02

AY01

AY00

AY00

AY00

AY00

AY00

AY00

AY04

AY03

AY02

AY01

AY00

AY00

AY00

AY00

AY00

AY00

AY04

AY03

AY02

AY01

AY00

AY00

AY00

AY00

AY00

AY00

AY04

AY03

AY02

AY01

AY00

AY00

AY00

AY00

AY00

AY00

AY04

AY03

AY02

AY01

AY00

AY00

AY00

AY00

AY00

AY00

AY04

AY03

AY02

AY01

AY00

AY00

AY00

AY00

AY00

AY00

AY04

AY03

AY02

AY01

AY00

AY00

AY00

AY00

AY00

AY00

AY04

AY03

AY02

AY01

AY00

AY00

AY00

AY00

AY00

AY00

AY04

AY03

AY02

AY01

AY00

AY00

AY00

AY00

AY00

AY00

AY04

AY03

AY02

AY01

AY00

AY00

AY00

AY00

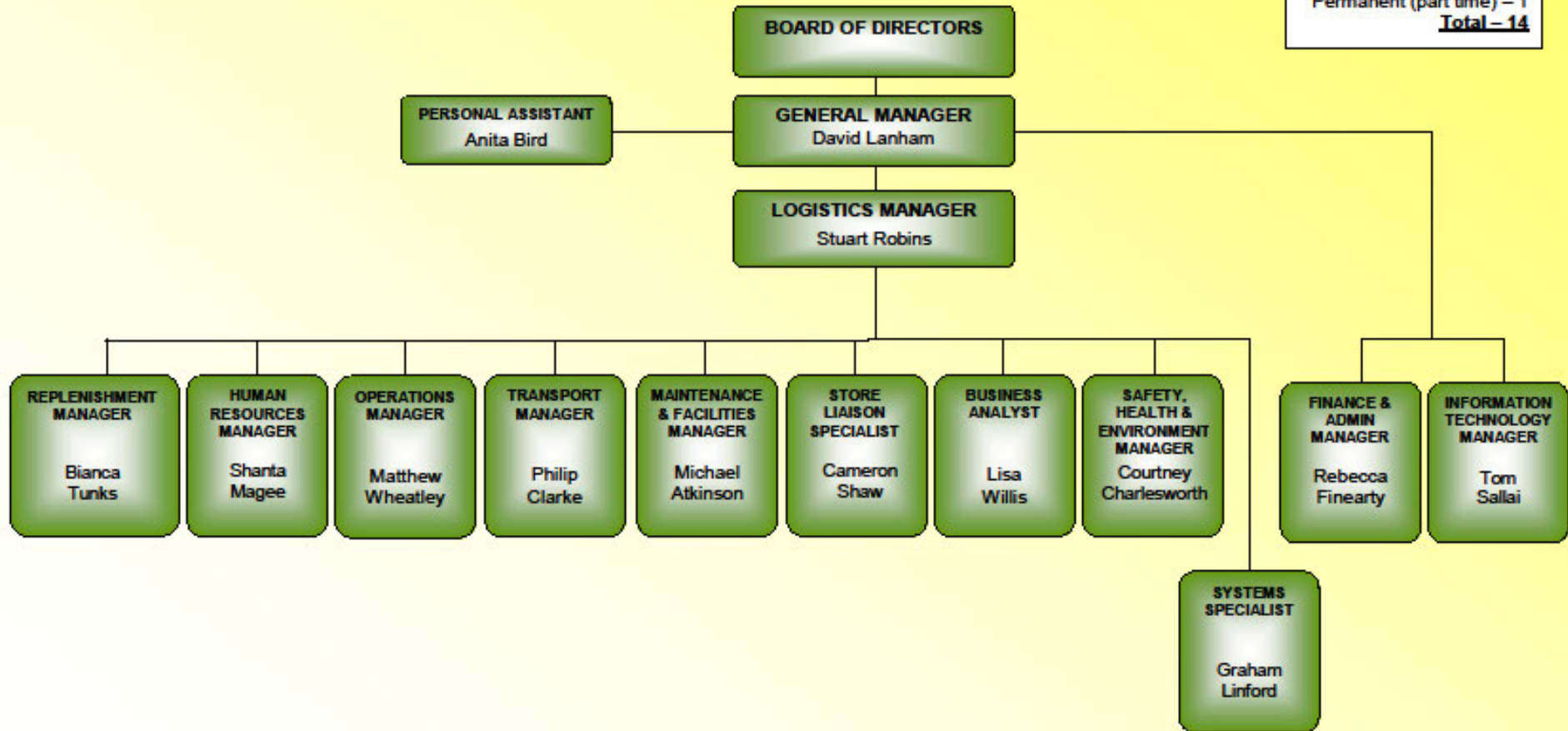
AY00

AY00



Statewide Independent Wholesalers Limited

Staff Numbers
Permanent (full time) – 13
Permanent (part time) – 1
Total – 14

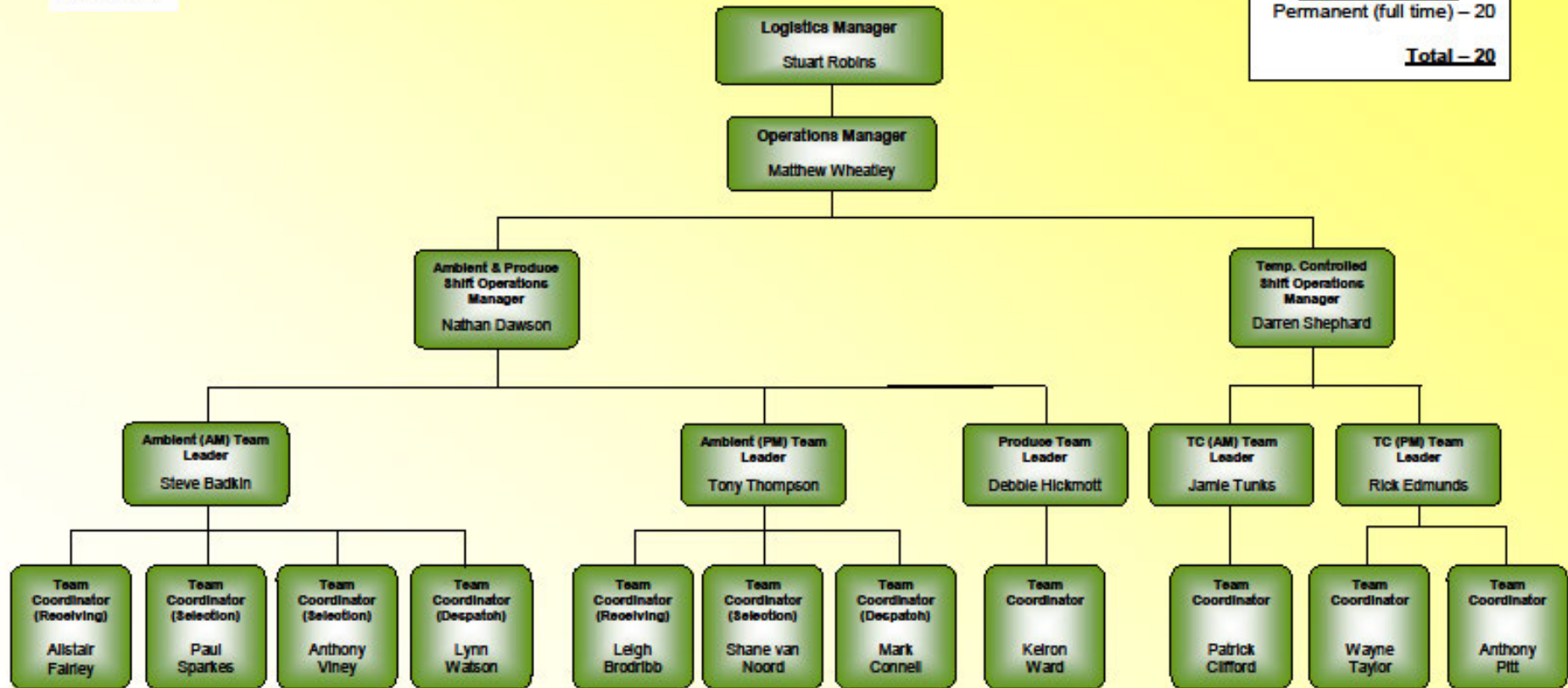


CnCFS Manager – Stephen Bennett (on extended sick leave)



Statewide Independent Wholesalers Limited

Staff Numbers
 Permanent (full time) – 20
Total – 20



Construction Update

- Ø **Total project on program for practical completion on 14th February 2012 (92% achieved)**
- Ø External Pavements (100% achieved)
 - Completed ahead of schedule
- Ø Materials Handling (74% achieved, 1 week behind program)
 - Lift installation completed and dock levellers all installed
- Ø Roof & wall cladding (99% achieved, on program)
 - Trimming & flashing works remain on-going
- Ø Fire protection (95% achieved, 6 weeks ahead of program)
 - Sprinkler tanks have been installed and sprinkler pumps are now on site
 - In-rack pipe work to the TC area is complete and fire sprinklers to the first floor of the main office are complete
- Ø Electrical (90% achieved, 3 weeks ahead of program)
 - All mains cabling has been completed, data and communications rough in to all areas remains ongoing
 - HV works have been completed – **permanent connection to site has been delayed until 16th December**
 - All light fittings have been installed
- Ø Plumbing (98% achieved, 3 weeks ahead of program)
 - All areas have been roughed in and fit-off works are following the finishes trades
- Ø Windows & Glazing (88% achieved, on program)
 - Framing and glazing to the main office complete, outbuildings windows installation before Xmas
- Ø Partition & Ceilings (75% achieved, 3 weeks ahead of schedule)
 - Partition walls to the main office are complete and ceilings have commenced (first floor completed)
- Ø Landscaping (4% achieved, 1 week behind program)
 - Topsoiling has commenced and orders have been placed for all plants and materials
- Ø Epoxy & Waterproofing (72% achieved and on program)
 - Works to Battery charger, MHE and plant platform areas are complete

